



Concept Mapping

Use the following template to help you create a concept map.

Ask yourself the following questions about your concept map:

- Have I considered all the relevant concepts identified in my research?
- Have I shown how the ideas fit together?
- Are there some relationships that only apply under particular conditions? Have these been noted?

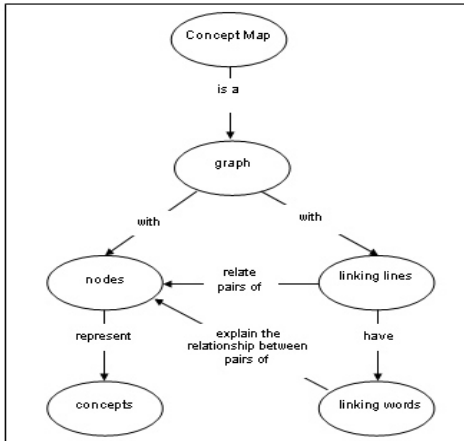


Image: Ruiz-Primo, M. (2000).

Elements of a Concept Map

1. **Concepts:** Use circles, ovals and squares to represent specific concepts, theories or themes.
2. **Connector Lines:** Draw lines or arrows connecting these pieces to each other or to the central topic or main argument.
3. **Connector Words:** Place connector words on the lines or arrows to communicate the relationships between concepts (e.g., “is an example of”, or “is evidence for”).

	<p>Central Topic:</p> <div style="border: 1px solid black; height: 100px; width: 100%;"></div>
--	---